

3 Day Introductory Course in ControlLogix and RSLogix 5000 Software

A RSLogix 5000 Training Seminar for Maintenance & Engineering

Denver Schedule: See Website <http://BIN95.com>

Register Today as class size is kept small

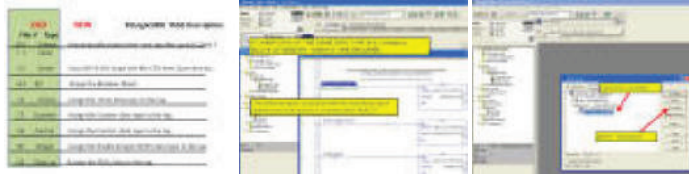
... or visit our website for details of our On-Site PLC Training at http://www.bin95.com/plc_training.htm

What you will learn ...

- **ControlLogix Day 1**
 - ControlLogix Overview
 - RSLogix 5000 Introduction
 - RSLogix 5000 Project Basics
 - RSLogix 5000 Tasks, Programs and Routines
 - ControlLogix Tags
 - RSLogix 5000 Discrete I/O
 - ControlLogix I/O
- **ControlLogix Day 2**
 - ControlLogix Troubleshooting
 - Working with Forces safely
 - Ladder Logic Instructions
 - Arrays and UDT's
- **ControlLogix Day 3**
 - RSLogix 5000 Programming Basics
 - RSLogix 5000 Documentation
 - Navigate a Real-world RSLogix 5000 Program Control
 - Where to find Help
 - Commissioning a processor



This is hands-on training with ControlLogix Systems and RSLogix 5000 software. Customers found the scheduling and cost of 4 day workshop difficult to manage. So we listened and compacted course to a 3 day introductory course in ControlLogix/RSLogix 5000.



Day 1

Day 2

Day 3

Please Click above respective graphic online to see sample from that day.

What you will receive ...

- World Class Training
- Hands On Experience
- Classroom Handouts on USB
- Certificate of Achievement
- The confidence to continue to learn and more.

We are a **Strategic Training Partner** for the Association for Facilities Engineering (AFE) and provide AFE members a 10% discount.

This hands-on course starts with an overview of the **AB ControlLogix system architecture** and an introduction of **RSLogix 5000 software**. Then the fundamentals of editing ladder logic and an introductory look at the Routines and the Tag Database are covered. Next students are introduced to program control instructions, comparison and math instructions, along with the importance of documenting an RSLogix 5000 project. Students will then move on to configuration of the **PLC discrete Input/Output modules**, and the advanced features available in the Tag Database.

After building this firm foundation in the AB ControlLogix hardware and RSLogix 5000 software, students move on to ControlLogix troubleshooting where they learn about RSLogix 5000 tools that can be used in troubleshooting. Status indicators on ControlLogix I/O and communication modules are also covered.

Seminar Ends 4:30 THURSDAY, book travel accordingly. (FRIDAY Travel recommended)

Denver Schedule:

See website BIN95.com

Or see our On-Site Training at ...

http://www.bin95.com/plc_training.htm

Prerequisite: We Strongly recommend that you participate in our 3 day PLC Troubleshooting course before taking this 3 day ControlLogix course to get a clear understanding of Allen Bradley's legacy PLCs and working with PLCs safely and reliably while reducing downtime. Please see, http://www.bin95.com/plc_logic_controller.htm

If you do not first attend our 3 day PLC Troubleshooting class, you will still need to be familiar with PLC Basics while having safe and reliable work habits as a prerequisite to this ControlLogix course.

Hotels closest to this Denver Training Center is the

[Courtyard Denver South/Park Meadows Mall](#)

(See BIN95.com for links to hotel.)

Highlights of this ControlLogix and RSLogix 5000 Course:

- **Hardware and Software Basics**
- **Communications (Ethernet & RS232)**
- **Programming Basics**
- **Troubleshooting, PLC Input/Output**
- **Arrays, Tag Database**
- **Small Class Size, Greater Knowledge Transfer.**

Cost: \$1450 Register online at <https://www.bin95.com/seminars/PAC-training-courses-denver.htm>

Or see our On-Site Training at ... http://www.bin95.com/plc_training.htm

Seminar Location ...



(Click picture online for location details)

DTC Denver, CO Building

The Point at Inverness

8310 S. Valley Highway, 3rd Floor, Englewood, CO 80112

This PLC ControlLogix/RSLogix 5000 seminar/workshop will be held in the state of the art training facility located on the 3rd floor of the **Denver - Point at Inverness Building**. (HQ)

All trademarks and trade names are property of their respective owners. We are in no way affiliated with Allen Bradley and do not promote any vendors during our training seminars.

↓ **REGISTRATION FORM ON NEXT PAGE** ↓



PLC/PAC Course - DTC Denver, CO. Registration

Troubleshooting using Allen Bradley ControlLogix - RSLogix 5000 Software



PAC courses registration for DTC Denver, CO venue.

Schedule: **Register Now** (Dates online at BIN95.com)

This PAC course is also offered as On-Site PLC Training, see http://www.bin95.com/plc_training.htm

Seminar Fee ...

\$1450. 10% discount to AFE members!

Registration Methods ...

- 1) **Online** (This page)
- 2) **Fax** (573) 547-6153
- 3) **Phone** (573) 547-5630
- 4) **Mail** this form to ...

Business Industrial Network

2 Cityplace Drive, Suite 200,
Saint Louis, MO 63141

- 5) **Email** all form information to

Training@bin95.com

Seminar Location ...

Denver, CO Training Building

The Point at Inverness
8310 S. Valley Highway,
3rd Floor, Englewood, CO 80112

*Located the 3rd floor of the
Point at Inverness Building.(Regus HQ)*

Tech Center Hotels ...

Candlewood Suites

10535 El Diente Ct
Englewood, CO 80112
Hotel Phone (303) 858-9900

Hilton Garden Inn

9290 Meridian Boulevard
Englewood, CO 80112
Hotel Phone (303) 824-1550

Note:

Seminar Ends 4:30 Thursday, book travel accordingly. (Fri rec.)

Seminar fee does not cover meals, travel or hotel. **Lunch is on us!**
Also check back for hotel discounts.

Schedule ...

Denver, CO Schedule:

(See BIN95.com for current schedule)

8:00am - Class Starts
12:00 - 1:00pm Lunch
4:30 - Class Ends

Authorizing Manager:

Name:

Title: Email:

Company Name:

Address:

City: Zip: State/Prov:

Phone: Fax:

3 Day Course Date:

<<< (Enter date found online here.)

\$1450

Seminar Attendees:

Name: Title:

Name: Title:

Name: Title:

Name: Title:

Payment Method: Amount to be charged **per attendee** is indicated by course selection above.

Please enter your credit card information below before submitting this secure form. You will also need to submit this form with contact information above filled out when paying with Check. When paying by PO, please fax copy to 573-547-6153

Visa MasterCard AMX Check Enclosed (pay to Business Industrial Network) PO copy Sent

Card Number:

Expiration Date: Card Code?:

Name on Card:

Signature:

Additional Information: *This seminar - workshop is great for those seeking adult continuing education to help qualify for jobs in Denver, CO. as well as the rest of the USA. If AFE member, please indicate so in name field. Registration fees may be applied to other training classes with no additional charges, if you can not make the original seminar. Denver Tech Centre directions and tech center hotels with in walking distance are available by links on the online PLC control logic training registration page. Hotels closest to this DTC Denver CO (Meridian area) is the Candlewood Suites. They are located within a 5 minute walk or 2 minute taxi! The second recommended hotel is the Hilton Garden Inn (Denver south/meridian) They are located within a 7-10 minute walk or a 3-4 min taxi! Taxi from Denver International Airport runs approximately \$55.00. The Light Rail (commuter train) is also in walking distance for those interested in going to Coor's Field for a baseball game, going down town Denver, etc*

We are a Strategic Training Partner for the Association for Facilities Engineering (AFE) and provide AFE members a 10% discount. (AFE discount may not be used with any other discounts.) **(1.6 CEU)**

You may also register for this course online at <https://www.bin95.com/seminars/PAC-training-courses-denver.htm>

- Thank You -

All trademarks and trade names are property of their respective owners. We are in no way affiliated with Allen Bradley and do not promote any vendors during our training seminars. Cancellation Policy link at bottom of online version of this form.