



PLC Diagnostic Enhancements

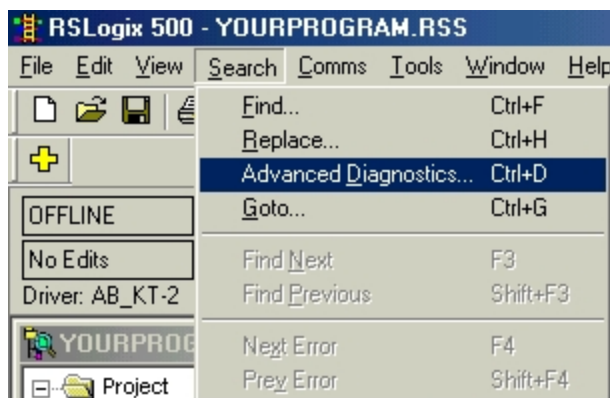


Quickly locate and monitor critical points of your existing RS-Logix® (Allen Bradley®) PLC programs with our diagnostic enhancements. We will analyze your machine program and use existing functions of the RS Logix® (no add-ons needed) to enhance your diagnostic capabilities. These tools will decrease your downtime while troubleshooting and enhance your machine monitoring capabilities.

Note: All diagnostic enhancements are passive to, and will in no way change the existing ladder logic. Purchase our PLC Diagnostics Enhancements before you schedule us to perform on-site PLC Training and we can include hands on instructions on how to get the most out of your new diagnostic tool.

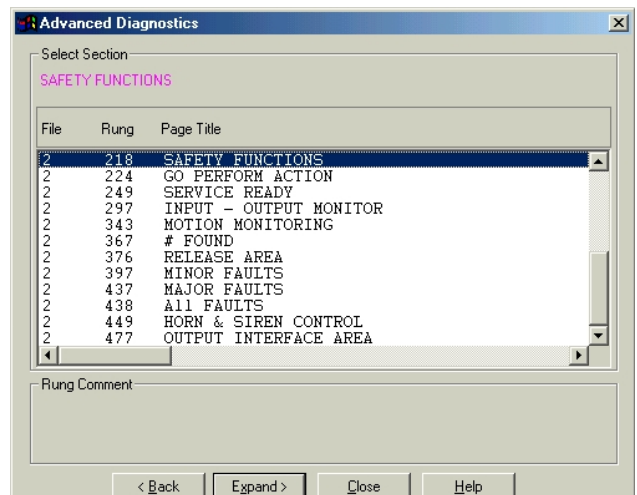
(Please see http://www.bin95.com/plc_training.htm for more details on our PLC Training)

Advanced Diagnostics



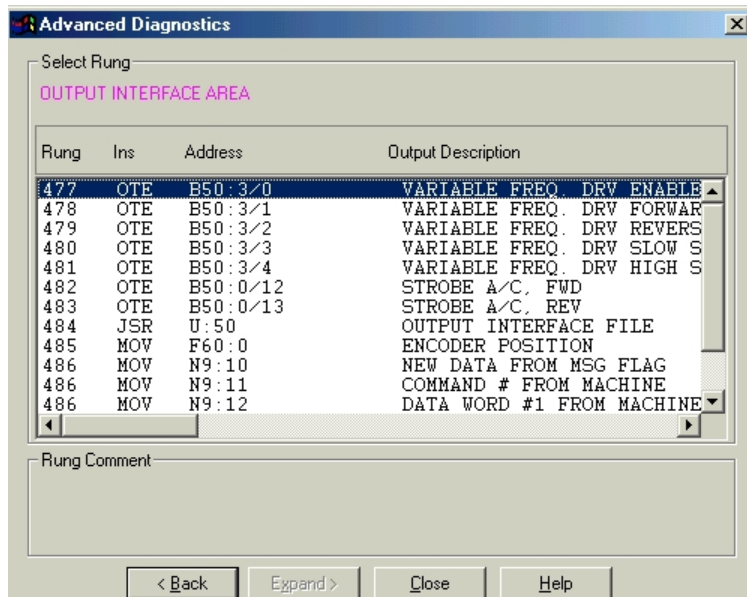
Open each of your PLC programs in RSLogix® and click on the Advanced Diagnostics option (Shown in pictorial to the left).

The picture to the right shows a sample of how the advanced Diagnostics Dialog box will look after we add the diagnostics information to you program file. Your current programs may be displaying just an empty dialog box.





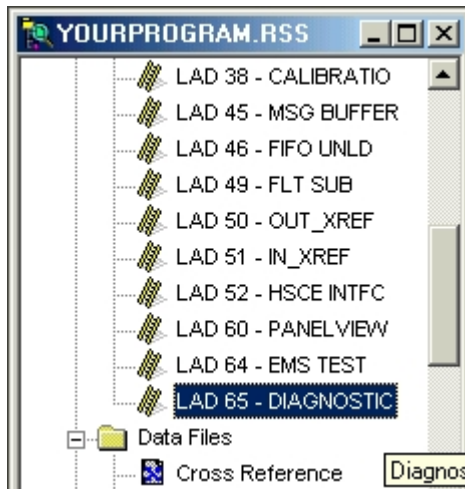
Advanced Diagnostics (Cont.)



The pictorial on the left shows you an example of how clicking on the any of the sub-sections outline in the previous dialog box, will take you to a list of all outputs associated with that section of the program.

The window showing your actual ladder logic will always automatically navigate to the program section or output you have selected in the Advanced Diagnostics dialog box for quick monitoring and troubleshooting.

Additional Diagnostic program file:



We will add an additional program file which will contain ladder logic to monitor and record history of fault outputs and other points of your program critical to troubleshooting in a timely manner.



Symbols to aid in search and programming:

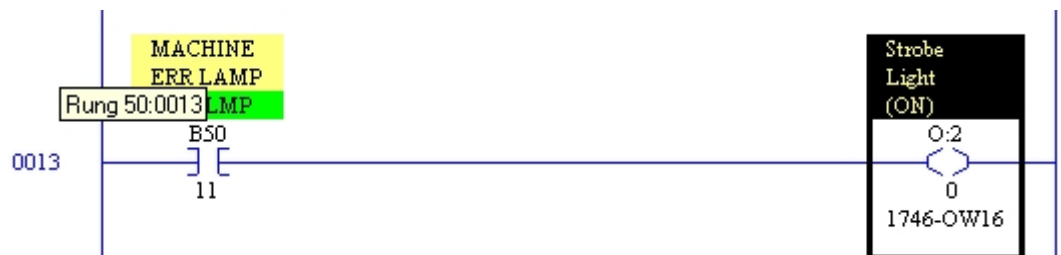


We will add Symbols to your primary inputs and outputs to further reduce time troubleshooting and understanding your PLC programs.

A "Symbol" is a word description of and interchangeable with PLC addresses.

No more having to remember or lookup meaningless addresses. If you want to search for, or insert a contact for the "Auto Lamp", instead of typing "B50:2/7" for example, you would just have to type "auto lamp". That makes a lot more sense.

Your Symbol will be highlighted above contact address for easy learning. (See rung to the right)



We can usually add all the above functionality in a well described PLC program for \$800. PLC Programs with little or no descriptors usually can be upgraded for \$1600. Please email us a copy of your program for a quote on adding this Diagnostics Package. (Please, only those serious about considering the upgrade need request a quote.)

Please complete contact information by clicking here. Then email the program(s) to plc@bin95.com
Subject: RFQ AB® PLC upgrade