



Business Industrial Network

We give you a medium in which to get equipment information, when you need it most...
when you're down!

Please visit www.bin95.com

Downtime Cost

Reports from online equipment downtime survey
www.AboutDowntime.com/Survey/Survey.asp

Industry	Num-Employees	Annual Downtime	TM per Month	Annual Cost Lost Production	
Automotive					
	100	Samples of data in database records.			
		Summary for 'Number of Employees' = 100 (1 detail record)			
		Avg	480 Hours	\$1,000.00	\$500,000.00
	200	Summary for 'Number of Employees' = 200 (2 detail records)			
		Avg	1000 Hours	\$30,000.00	\$25,050,000.00
	300	Summary for 'Number of Employees' = 300 (1 detail record)			
		Avg	240 Hours	\$10,000.00	\$10,000.00
	500	Summary for 'Number of Employees' = 500 (1 detail record)			
		Avg	480 Hours	\$4,000.00	\$100,000.00
Summary for 'Industry' = Automotive (5 detail records)					
		Avg	640 Hours	\$15,000.00	\$10,142,000.00

Wednesday, September 19, 2001

Page 1 of 9

This database and documentation is the confidential and proprietary information of Business Industrial Network ("Confidential Information"). You shall not disclose such Confidential Information and shall use it only in accordance with the terms of the license agreement you entered into with Business Industrial Network.

No portion of these proceedings or exhibits may be copied, duplicated, used or referenced without written permission from Business Industrial Network. bin95@bin95.com

Downtime Cost

Reports from online equipment downtime survey
www.AboutDowntime.com/Survey/Survey.asp

<i>Industry</i>	<i>Num-Employees</i>	<i>Annual Downtime</i>	<i>TM per Month</i>	<i>Annual Cost Lost Production</i>
Food, beverages, tobacco				
	50			Samples of data in database records.
		Summary for 'Number of Employees' = 50 (2 detail records)		
		Avg	120 Hours	\$500.00
				\$50,000.00
	100			
		Summary for 'Number of Employees' = 100 (1 detail record)		
		Avg	1000 Hours	\$50,000.00
				\$500,000.00
	200			
		Summary for 'Number of Employees' = 200 (4 detail records)		
		Avg	500 Hours	\$16,000.00
				\$250,000.00
Summary for 'Industry' = Food, beverages, tobacco (7 detail records)				
		Avg	463 Hours	\$16,428.57
				\$228,571.43

This database and documentation is the confidential and proprietary information of Business Industrial Network ("Confidential Information"). You shall not disclose such Confidential Information and shall use it only in accordance with the terms of the license agreement you entered into with Business Industrial Network.

No portion of these proceedings or exhibits may be copied, duplicated, used or referenced without written permission from Business Industrial Network. bin95@bin95.com

Downtime Cost

Reports from online equipment downtime survey
www.AboutDowntime.com/Survey/Survey.asp

<i>Industry</i>	<i>Num-Employees</i>	<i>Annual Downtime</i>	<i>TM per Month</i>	<i>Annual Cost Lost Production</i>
Injection molding/ Extrusion				
	30	Samples of data in database records.		
		<i>Summary for 'Number of Employees' = 30 (3 detail records)</i>		
		Avg	120 Hours	\$2,666.67
				\$66,666.67
	300	<i>Summary for 'Number of Employees' = 300 (1 detail record)</i>		
		Avg	240 Hours	\$20,000.00
				\$500,000.00
	1000	<i>Summary for 'Number of Employees' = 1000 (1 detail record)</i>		
		Avg	120 Hours	\$10,000.00
				\$50,000,000.00
<i>Summary for 'Industry' = Injection molding/ Extrusion (5 detail records)</i>				
		Avg	144 Hours	\$7,600.00
				\$10,140,000.00

Downtime Cost

Reports from online equipment downtime survey
www.AboutDowntime.com/Survey/Survey.asp

<i>Industry</i>	<i>Num-Employees</i>	<i>Annual Downtime</i>	<i>TM per Month</i>	<i>Annual Cost Lost Production</i>
Machinery and equipment				
	30	Samples of data in database records.		
		Summary for 'Number of Employees' = 30 (3 detail records)		
		Avg	853 Hours	\$27,000.00
				\$173,333.33
	50	Summary for 'Number of Employees' = 50 (1 detail record)		
		Avg	120 Hours	\$20,000.00
				\$100,000.00
	200	Summary for 'Number of Employees' = 200 (1 detail record)		
		Avg	0 Hours	\$4,000.00
				\$10,000.00
	1000	Summary for 'Number of Employees' = 1000 (4 detail records)		
		Avg	120 Hours	\$29,500.00
				\$37,625,000.00
Summary for 'Industry' = Machinery and equipment (9 detail records)				
		Avg	351 Hours	\$24,777.78
				\$16,792,222.22

This database and documentation is the confidential and proprietary information of Business Industrial Network ("Confidential Information"). You shall not disclose such Confidential Information and shall use it only in accordance with the terms of the license agreement you entered into with Business Industrial Network.

No portion of these proceedings or exhibits may be copied, duplicated, used or referenced without written permission from Business Industrial Network. bin95@bin95.com

Downtime Cost

Reports from online equipment downtime survey
www.AboutDowntime.com/Survey/Survey.asp

<i>Industry</i>	<i>Num-Employees</i>	<i>Annual Downtime</i>	<i>TM per Month</i>	<i>Annual Cost Lost Production</i>	
Metal products				Samples of data in database records.	
	50				
		Summary for 'Number of Employees' = 50 (1 detail record)			
		Avg	120 Hours	\$4,000.00	\$10,000.00
	150				
		Summary for 'Number of Employees' = 150 (1 detail record)			
		Avg	1680 Hours	\$60,000.00	\$500,000.00
	200				
		Summary for 'Number of Employees' = 200 (4 detail records)			
		Avg	560 Hours	\$18,500.00	\$12,550,000.00
		Summary for 'Industry' = Metal products (6 detail records)			
		Avg	673 Hours	\$23,000.00	\$8,451,666.67

Wednesday, September 19, 2001

Page 5 of 9

This database and documentation is the confidential and proprietary information of Business Industrial Network ("Confidential Information"). You shall not disclose such Confidential Information and shall use it only in accordance with the terms of the license agreement you entered into with Business Industrial Network.

No portion of these proceedings or exhibits may be copied, duplicated, used or referenced without written permission from Business Industrial Network. bin95@bin95.com

Downtime Cost

Reports from online equipment downtime survey
www.AboutDowntime.com/Survey/Survey.asp

Industry	Num-Employees	Annual Downtime	TM per Month	Annual Cost Lost Production
Other				Samples of data in database records.
	0			
		Summary for 'Number of Employees' = 0 (1 detail record)		
		Avg	120 Hours	\$20,000.00 \$10,000.00
	30			
		Summary for 'Number of Employees' = 30 (4 detail records)		
		Avg	210 Hours	\$8,750.00 \$255,000.00
	50			
		Summary for 'Number of Employees' = 50 (1 detail record)		
		Avg	1000 Hours	\$30,000.00 \$0.00
	100			
		Summary for 'Number of Employees' = 100 (4 detail records)		
		Avg	360 Hours	\$20,000.00 \$300,000.00
	200			
		Summary for 'Number of Employees' = 200 (17 detail records)		
		Avg	562 Hours	\$20,058.82 \$12,018,235.29
	300			
		Summary for 'Number of Employees' = 300 (1 detail record)		
		Avg	0 Hours	\$0.00 \$0.00
	400			
		Summary for 'Number of Employees' = 400 (1 detail record)		
		Avg	1200 Hours	\$130,000.00 \$1,000,000.00
	1200			
		Summary for 'Number of Employees' = 1200 (1 detail record)		
		Avg	120 Hours	\$1,000.00 \$10,000.00
Summary for 'Industry' = Other (30 detail records)				
Avg		476 Hours	\$21,233.33	\$6,918,333.33

Wednesday, September 19, 2001

Page 6 of 9

This database and documentation is the confidential and proprietary information of Business Industrial Network ("Confidential Information"). You shall not disclose such Confidential Information and shall use it only in accordance with the terms of the license agreement you entered into with Business Industrial Network.

No portion of these proceedings or exhibits may be copied, duplicated, used or referenced without written permission from Business Industrial Network. bin95@bin95.com

Downtime Cost

Reports from online equipment downtime survey
www.AboutDowntime.com/Survey/Survey.asp

<i>Industry</i>	<i>Num-Employees</i>	<i>Annual Downtime</i>	<i>TM per Month</i>	<i>Annual Cost Lost Production</i>
Paper				Samples of data in database records.
	30			
		Summary for 'Number of Employees' = 30 (1 detail record)		
		Avg	120 Hours	\$0.00
				\$10,000.00
	50			
		Summary for 'Number of Employees' = 50 (1 detail record)		
		Avg	120 Hours	\$0.00
				\$10,000.00
	150			
		Summary for 'Number of Employees' = 150 (1 detail record)		
		Avg	0 Hours	\$0.00
				\$0.00
	200			
		Summary for 'Number of Employees' = 200 (1 detail record)		
		Avg	1000 Hours	\$0.00
				\$0.00
Summary for 'Industry' = Paper (4 detail records)				
		Avg	310 Hours	\$0.00
				\$5,000.00

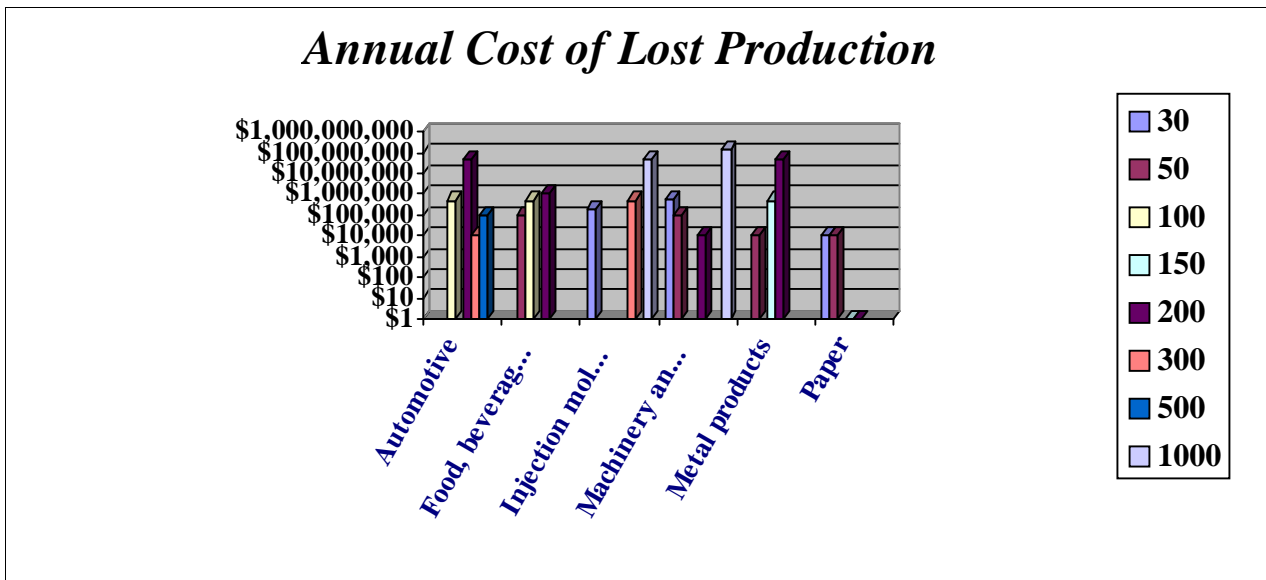
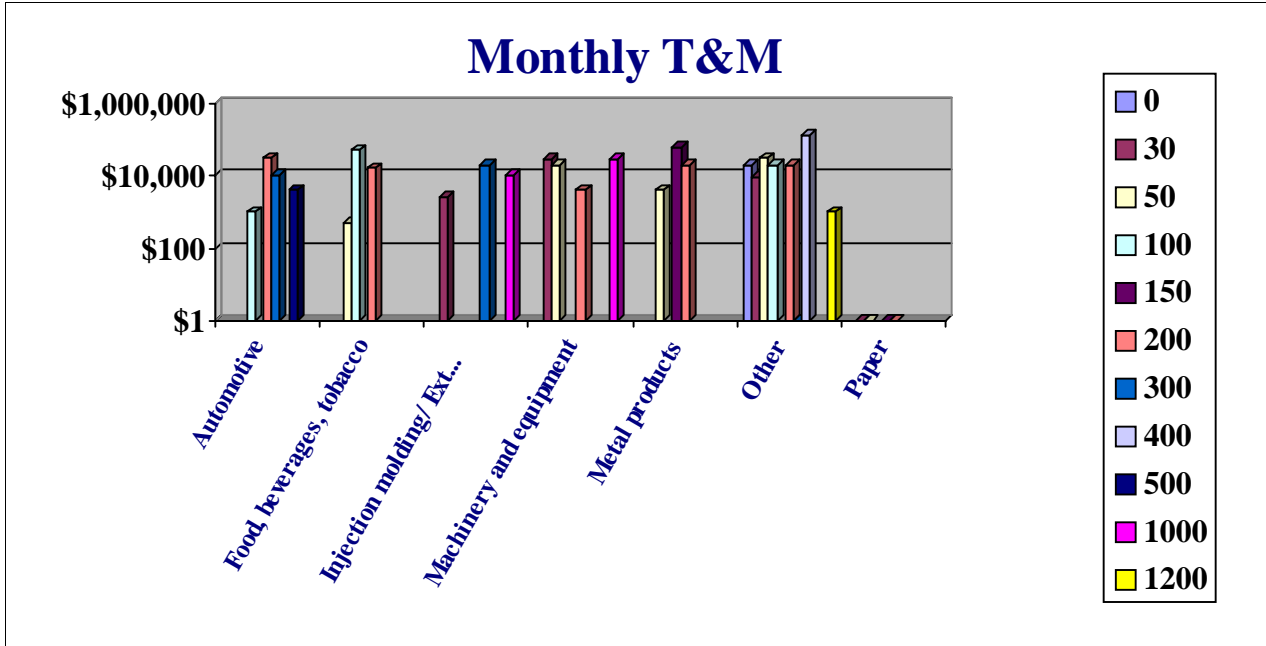
This database and documentation is the confidential and proprietary information of Business Industrial Network ("Confidential Information"). You shall not disclose such Confidential Information and shall use it only in accordance with the terms of the license agreement you entered into with Business Industrial Network.

No portion of these proceedings or exhibits may be copied, duplicated, used or referenced without written permission from Business Industrial Network. bin95@bin95.com

Downtime Cost

Reports from online equipment downtime survey
www.AboutDowntime.com/Survey/Survey.asp

Industry	Num-Employees	Annual Downtime	TM per Month	Annual Cost Lost Production
----------	---------------	-----------------	--------------	-----------------------------



This database and documentation is the confidential and proprietary information of Business Industrial Network ("Confidential Information"). You shall not disclose such Confidential Information and shall use it only in accordance with the terms of the license agreement you entered into with Business Industrial Network.

No portion of these proceedings or exhibits may be copied, duplicated, used or referenced without written permission from Business Industrial Network. bin95@bin95.com

Downtime Cost

Reports from online equipment downtime survey
www.AboutDowntime.com/Survey/Survey.asp

<i>Industry</i>	<i>Num-Employees</i>	<i>Annual Downtime</i>	<i>TM per Month</i>	<i>Annual Cost Lost Production</i>
------------------------	-----------------------------	-------------------------------	----------------------------	---

Wednesday, September 19, 2001

Page 9 of 9

This database and documentation is the confidential and proprietary information of Business Industrial Network ("Confidential Information"). You shall not disclose such Confidential Information and shall use it only in accordance with the terms of the license agreement you entered into with Business Industrial Network.

No portion of these proceedings or exhibits may be copied, duplicated, used or referenced without written permission from Business Industrial Network. bin95@bin95.com



Business Industrial Network

We give you a medium in which to get equipment information, when you need it most...
when you're down!

Please visit www.bin95.com

PLC-Tech

Reports from online equipment downtime survey
www.AboutDowntime.com/Survey/Survey.asp

Industry	Maint. Employees Total Employees	PLCbrands	Number of PLCs PLC Technicians
<i>Automotive</i>			
	10	Schneider	6
	100		6
	130	Allen-Bradley, Siemens, GE Fanuc, Modicon/Gould, Honeywell, SquareD	6
	200		6
	50	Telemechanique	6
	200		1
	100	Allen-Bradley	6
	300		6
	10	Omron	4
	500		6
Summary for 'Industry' = Automotive (5 detail records)			
Avg	Trade Empl.: 60	# of PLCs.: 6	# of Techs 5

Samples of data in database records.

Industry	Maint. Employees Total Employees	PLCbrands	Number of PLCs PLC Technicians
<i>Food, beverages, tobacco</i>		Samples of data in database records.	
		Allen-Bradley, GE Fanuc	4
	50		2
		Siemens, Honeywell	0
	50		1
	15	Allen-Bradley	6
	100		2
	30	Allen-Bradley, Modicon/Gould	6
	200		3
	30	Allen-Bradley	6
	200		2
	30	Allen-Bradley	6
	200		6
	30	Allen-Bradley, Siemens, GE Fanuc	5
	200		2
<i>Summary for 'Industry' = Food, beverages, tobacco (7 detail records)</i>			
Avg	Trade Empl.: 27	# of PLCs.: 5	# of Techs 3

Industry	Maint. Employees Total Employees	PLCbrands	Number of PLCs PLC Technicians
<i>Injection molding/ Extrusion</i>		Samples of data in database records.	
	5	Allen-Bradley	1
	30		2
	5	Allen-Bradley	1
	30		1
	5	Allen-Bradley	1
	30		1
	30	Allen-Bradley, Modicon/Gould	6
	300		6
	100	Allen-Bradley, Siemens, Mitsubishi, Telemecanique, SquareD	5
	1000		6
<i>Summary for 'Industry' = Injection molding/ Extrusion (5 detail records)</i>			
Avg	Trade Empl.: 29	# of PLCs.: 3	# of Techs 3

Industry	Maint. Employees Total Employees	PLCbrands	Number of PLCs PLC Technicians
----------	-------------------------------------	-----------	-----------------------------------

Machinery and equipment

Samples of data in database records.

5	Don't Know	6
30		4
5	Not Selected	4
30		1
5	Not Selected	6
30		2
5	Allen-Bradley	4
50		1
100	Allen-Bradley	0
200		2
50	Telemecanique, SquareD	6
1000		6
50	GE Fanuc	6
1000		6
50	Telemecanique, SquareD	6
1000		6
100	Allen-Bradley, Mitsubishi, Telemecanique, SquareD	6
1000		6

Summary for 'Industry' = Machinery and equipment (9 detail records)

Avg	Trade Empl.: 41	# of PLCs.: 5	# of Techs 4
------------	------------------------	----------------------	---------------------

Industry	Maint. Employees Total Employees	PLCbrands	Number of PLCs PLC Technicians
<i>Metal products</i>		Samples of data in database records.	
	5	SquareD	1
	50		1
	10	Allen-Bradley	5
	150		2
	130	Siemens, Mitsubishi	0
	200		6
	50	Allen-Bradley	6
	200		6
	30	Not Selected, Allen-Bradley, Omron, Siemens, Mitsubishi, Toshiba	6
	200		6
	5	Allen-Bradley, GE Fanuc, PLCDirect, Telemecanique, IDEC	6
	200		1
<i>Summary for 'Industry' = Metal products (6 detail records)</i>			
Avg	Trade Empl.: 38	# of PLCs.: 4	# of Techs 4

Industry	Maint. Employees Total Employees	PLCbrands	Number of PLCs PLC Technicians
----------	-------------------------------------	-----------	-----------------------------------

Other

Samples of data in database records.

0	Not Selected	0
0		0
5	Not Selected	0
30		0
5	Schneider	6
30		1
30	Allen-Bradley	6
30		5
5	PLCDirect	1
30		4
30	Not Selected	0
50		2
5	Allen-Bradley	3
100		1
5	Not Selected	9
100		0
50	Allen-Bradley, GE Fanuc, PLCDirect	0
100		5
50	Allen-Bradley, Siemens	6
100		3
50	Allen-Bradley	6
200		5
50	Don't Know	0
200		4

Industry	Maint. Employees Total Employees	PLCbrands	Number of PLCs PLC Technicians
	50	Siemens	6
	200		6
	130	Allen-Bradley	0
	200		6
	130	Allen-Bradley	6
	200		5
	30	Omron	6
	200		2
	50	Modicon/Gould	6
	200		6
	50	Don't Know	6
	200		6
	130	Don't Know	6
	200		6
	50	Allen-Bradley	6
	200		6
	130	Not Selected	0
	200		0
	15	Allen-Bradley, Omron, Siemens, Mitsubishi, GE Fanuc, Modicon/Gould	6
	200		4
	130	Modicon/Gould	6
	200		6
	30	Allen-Bradley, Omron, GE Fanuc	5
	200		2

PLC-Tech

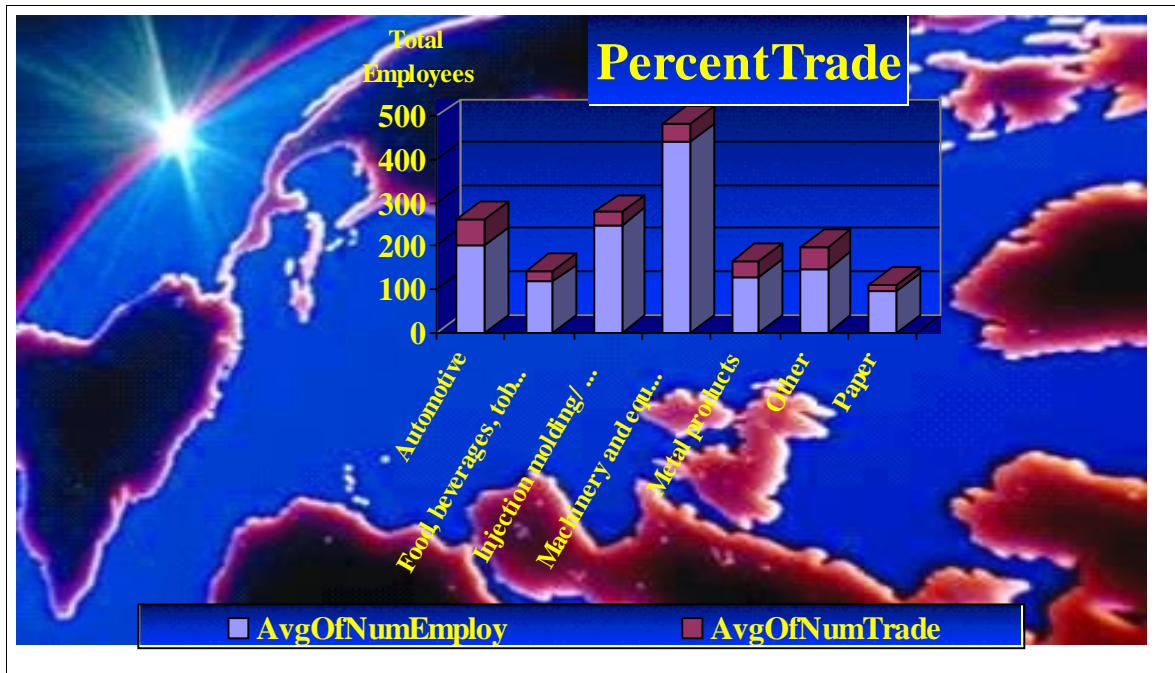
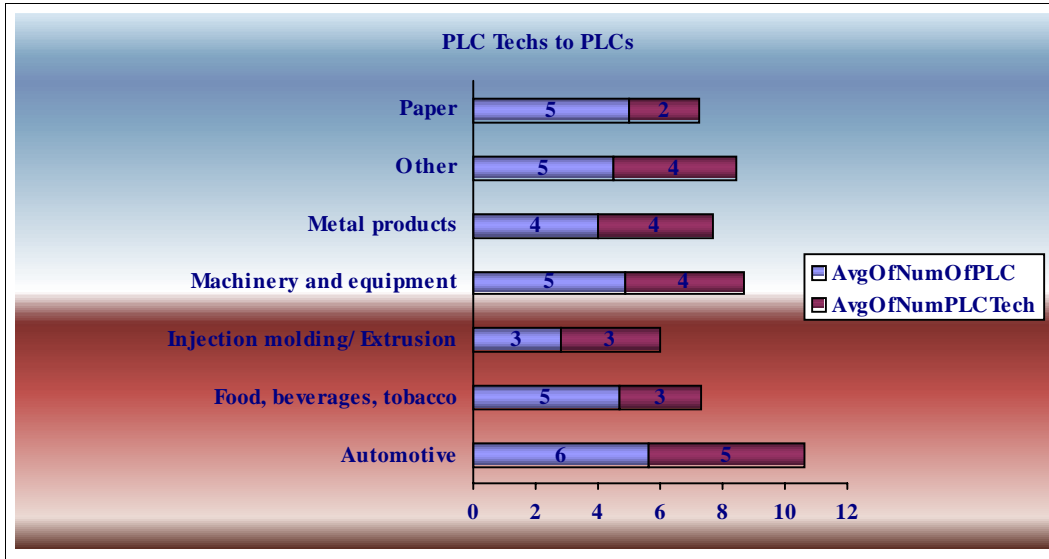
Reports from online equipment downtime survey
www.AboutDowntime.com/Survey/Survey.asp

Industry	Maint. Employees Total Employees	PLCbrands	Number of PLCs PLC Technicians
	30	Allen-Bradley	6
	200		6
	50	Allen-Bradley	6
	200		4
	30	Allen-Bradley	6
	200		6
	50	Allen-Bradley	6
	300		6
	15	Allen-Bradley, Omron, Siemens, Telemecanique, Schneider	6
	400		6
	150	Allen-Bradley	9
	1200		6
Summary for 'Industry' = Other (30 detail records)			
Avg	Trade Empl.: 51	# of PLCs.: 4	# of Techs 4

Industry	Maint. Employees Total Employees	PLCbrands	Number of PLCs PLC Technicians
<i>Paper</i>			
	5	Siemens	6
	30		1
	5	Not Selected	2
	50		1
	10	Allen-Bradley	6
	150		3
	30	Allen-Bradley, Siemens, GE Fanuc, Cutler Hammer	6
	200		4
Summary for 'Industry' = Paper (4 detail records)			
Avg	Trade Empl.: 12	# of PLCs.: 5	# of Techs 2

Samples of data in database records.

Industry	Maint. Employees Total Employees	PLCbrands	Number of PLCs PLC Technicians
----------	-------------------------------------	-----------	-----------------------------------





Business Industrial Network

We give you a medium in which to get equipment information, when you need it most...
when you're down!

Please visit www.bin95.com

OEM Cost

Reports from online equipment downtime survey
www.AboutDowntime.com/Survey/Survey.asp

Industry	NumEmploy	Max OEM response time	OEM average cost Per Year
Automotive			
	100		Samples of data in database records.
		Record ID Number 680	20Hours
			\$10,000.00
		Summary for 'NumEmploy' = 100 (1 detail record)	
		Avg	20Hours
			\$10,000.00
		Max	20 Hours
	200		
		Record ID Number 440	10Hours
			\$500,000.00
		Record ID Number 140	10Hours
		Summary for 'NumEmploy' = 200 (2 detail records)	
		Avg	10Hours
			\$500,000.00
		Max	10 Hours
	300		
		Record ID Number 100	40Hours
			\$100,000.00
		Summary for 'NumEmploy' = 300 (1 detail record)	
		Avg	40Hours
			\$100,000.00
		Max	40 Hours
	500		
		Record ID Number 690	10Hours
			\$10,000.00
		Summary for 'NumEmploy' = 500 (1 detail record)	
		Avg	10Hours
			\$10,000.00
		Max	10 Hours

Wednesday, September 19, 2001

Page 1 of 11

*This database and documentation is the confidential and proprietary information of Business Industrial Network ("Confidential Information"). You shall not disclose such Confidential Information and shall use it only in accordance with the terms of the license agreement you entered into with Business Industrial Network.
No portion of these proceedings or exhibits may be copied, duplicated, used or referenced without written permission from Business Industrial Network. bin95@bin95.com*

OEM Cost

Reports from online equipment downtime survey
www.AboutDowntime.com/Survey/Survey.asp

<i>Industry</i>	<i>NumEmploy</i>	<i>Max OEM response time</i>	<i>OEM average cost Per Year</i>
<i>Summary for 'Industry' = Automotive (5 detail records)</i>			
<i>Avg</i>		<i>18 Hours</i>	<i>\$155,000.00</i>
<i>Max</i>		<i>40 Hours</i>	

Wednesday, September 19, 2001

Page 2 of 11

*This database and documentation is the confidential and proprietary information of Business Industrial Network ("Confidential Information"). You shall not disclose such Confidential Information and shall use it only in accordance with the terms of the license agreement you entered into with Business Industrial Network.
No portion of these proceedings or exhibits may be copied, duplicated, used or referenced without written permission from Business Industrial Network. bin95@bin95.com*

OEM Cost

Reports from online equipment downtime survey
www.AboutDowntime.com/Survey/Survey.asp

Industry	NumEmploy	Max OEM response time	OEM average cost Per Year
Food, beverages, tobacco		Samples of data in database records.	
	50		
	Record ID Number 380	Hours	
	Record ID Number 540	50Hours	
	<i>Summary for 'NumEmploy' = 50 (2 detail records)</i>		
	Avg	50Hours	
	Max	50 Hours	
	100		
	Record ID Number 600	50Hours	\$100,000.00
	<i>Summary for 'NumEmploy' = 100 (1 detail record)</i>		
	Avg	50Hours	\$100,000.00
	Max	50 Hours	
	200		
	Record ID Number 300	40Hours	
	Record ID Number 390	40Hours	\$10,000.00
	Record ID Number 450	Hours	
	Record ID Number 610	40Hours	\$100,000.00
	<i>Summary for 'NumEmploy' = 200 (4 detail records)</i>		
	Avg	40Hours	\$55,000.00
	Max	40 Hours	
	<i>Summary for 'Industry' = Food, beverages, tobacco (7 detail records)</i>		
	Avg	44 Hours	\$70,000.00
	Max	50 Hours	

Wednesday, September 19, 2001

Page 3 of 11

*This database and documentation is the confidential and proprietary information of Business Industrial Network ("Confidential Information"). You shall not disclose such Confidential Information and shall use it only in accordance with the terms of the license agreement you entered into with Business Industrial Network.
 No portion of these proceedings or exhibits may be copied, duplicated, used or referenced without written permission from Business Industrial Network. bin95@bin95.com*

OEM Cost

Reports from online equipment downtime survey
www.AboutDowntime.com/Survey/Survey.asp

Industry	NumEmploy	Max OEM response time	OEM average cost Per Year
Injection molding/ Extrusion		Samples of data in database records.	
	30		
	Record ID Number 200	10Hours	\$10,000.00
	Record ID Number 360	10Hours	
	Record ID Number 550	50Hours	\$10,000.00
	<i>Summary for 'NumEmploy' = 30 (3 detail records)</i>		
	Avg	23Hours	\$10,000.00
	Max	50 Hours	
	300		
	Record ID Number 190	40Hours	\$100,000.00
	<i>Summary for 'NumEmploy' = 300 (1 detail record)</i>		
	Avg	40Hours	\$100,000.00
	Max	40 Hours	
	1000		
	Record ID Number 720	70Hours	\$10,000.00
	<i>Summary for 'NumEmploy' = 1000 (1 detail record)</i>		
	Avg	70Hours	\$10,000.00
	Max	70 Hours	
	<i>Summary for 'Industry' = Injection molding/ Extrusion (5 detail records)</i>		
	Avg	36 Hours	\$32,500.00
	Max	70 Hours	

Wednesday, September 19, 2001

Page 4 of 11

*This database and documentation is the confidential and proprietary information of Business Industrial Network ("Confidential Information"). You shall not disclose such Confidential Information and shall use it only in accordance with the terms of the license agreement you entered into with Business Industrial Network.
No portion of these proceedings or exhibits may be copied, duplicated, used or referenced without written permission from Business Industrial Network. bin95@bin95.com*

OEM Cost

Reports from online equipment downtime survey
www.AboutDowntime.com/Survey/Survey.asp

Industry	NumEmploy	Max OEM response time	OEM average cost Per Year
Machinery and equipment			
Samples of data in database records.			
30			
	Record ID Number 80	10Hours	\$10,000.00
	Record ID Number 620	10Hours	\$10,000.00
	Record ID Number 700	20Hours	\$500,000.00
Summary for 'NumEmploy' = 30 (3 detail records)			
	Avg	13Hours	\$173,333.33
	Max	20 Hours	
50			
	Record ID Number 670	10Hours	\$100,000.00
Summary for 'NumEmploy' = 50 (1 detail record)			
	Avg	10Hours	\$100,000.00
	Max	10 Hours	
200			
	Record ID Number 110	10Hours	\$10,000.00
Summary for 'NumEmploy' = 200 (1 detail record)			
	Avg	10Hours	\$10,000.00
	Max	10 Hours	
1000			
	Record ID Number 740	80Hours	\$100,000.00
	Record ID Number 810	10Hours	\$10,000.00
	Record ID Number 730	80Hours	\$100,000.00
	Record ID Number 710	80Hours	\$100,000.00
Summary for 'NumEmploy' = 1000 (4 detail records)			
	Avg	62Hours	\$77,500.00
	Max	80 Hours	
Summary for 'Industry' = Machinery and equipment (9 detail records)			
	Avg	34 Hours	\$104,444.44
	Max	80 Hours	

Wednesday, September 19, 2001

Page 5 of 11

*This database and documentation is the confidential and proprietary information of Business Industrial Network ("Confidential Information"). You shall not disclose such Confidential Information and shall use it only in accordance with the terms of the license agreement you entered into with Business Industrial Network.
No portion of these proceedings or exhibits may be copied, duplicated, used or referenced without written permission from Business Industrial Network. bin95@bin95.com*

OEM Cost

Reports from online equipment downtime survey
www.AboutDowntime.com/Survey/Survey.asp

Industry	NumEmploy	Max OEM response time	OEM average cost Per Year
Metal products		Samples of data in database records.	
	50		
	Record ID Number 320	10Hours	\$10,000.00
	Summary for 'NumEmploy' = 50 (1 detail record)		
	Avg	10Hours	\$10,000.00
	Max	10 Hours	
	150		
	Record ID Number 770	50Hours	\$100,000.00
	Summary for 'NumEmploy' = 150 (1 detail record)		
	Avg	50Hours	\$100,000.00
	Max	50 Hours	
	200		
	Record ID Number 400	Hours	\$500,000.00
	Record ID Number 480	10Hours	\$100,000.00
	Record ID Number 160	40Hours	\$100,000.00
	Record ID Number 640	Hours	\$10,000.00
	Summary for 'NumEmploy' = 200 (4 detail records)		
	Avg	25Hours	\$177,500.00
	Max	40 Hours	
	Summary for 'Industry' = Metal products (6 detail records)		
	Avg	28 Hours	\$136,666.67
	Max	50 Hours	

OEM Cost

Reports from online equipment downtime survey
www.AboutDowntime.com/Survey/Survey.asp

Industry	NumEmploy	Max OEM response time	OEM average cost Per Year
----------	-----------	-----------------------	---------------------------

Other

Samples of data in database records.

0

Record ID Number 120	Hours		
Summary for 'NumEmploy' = 0 (1 detail record)			
Avg	Hours		
Max	Hours		

30

Record ID Number 430	50Hours		\$10,000.00
Record ID Number 250	10Hours		\$10,000.00
Record ID Number 150	10Hours		\$10,000.00
Record ID Number 650	Hours		\$10,000.00
Summary for 'NumEmploy' = 30 (4 detail records)			
Avg	23Hours		\$10,000.00
Max	50 Hours		

50

Record ID Number 170	20Hours		\$100,000.00
Summary for 'NumEmploy' = 50 (1 detail record)			
Avg	20Hours		\$100,000.00
Max	20 Hours		

100

Record ID Number 790	10Hours		\$100,000.00
Record ID Number 780	Hours		
Record ID Number 520	40Hours		\$100,000.00
Record ID Number 290	20Hours		\$500,000.00
Summary for 'NumEmploy' = 100 (4 detail records)			
Avg	23Hours		\$233,333.33
Max	40 Hours		

200

Record ID Number 260	40Hours		\$10,000.00
Record ID Number 630	Hours		

Wednesday, September 19, 2001

Page 7 of 11

*This database and documentation is the confidential and proprietary information of Business Industrial Network ("Confidential Information"). You shall not disclose such Confidential Information and shall use it only in accordance with the terms of the license agreement you entered into with Business Industrial Network.
 No portion of these proceedings or exhibits may be copied, duplicated, used or referenced without written permission from Business Industrial Network. bin95@bin95.com*

OEM Cost

Reports from online equipment downtime survey
www.AboutDowntime.com/Survey/Survey.asp

Industry	NumEmploy	Max OEM response time	OEM average cost Per Year
	Record ID Number 180	10Hours	\$10,000.00
	Record ID Number 350	40Hours	\$500,000.00
	Record ID Number 270	10Hours	\$10,000.00
	Record ID Number 280	Hours	
	Record ID Number 560	20Hours	\$10,000.00
	Record ID Number 470	40Hours	
	Record ID Number 530	50Hours	
	Record ID Number 230	50Hours	\$1,500,000.00
	Record ID Number 410	40Hours	\$100,000.00
	Record ID Number 240	40Hours	\$100,000.00
	Record ID Number 570	Hours	
	Record ID Number 340	10Hours	\$10,000.00
	Record ID Number 330	50Hours	\$100,000.00
	Record ID Number 310	40Hours	\$500,000.00
	Record ID Number 500	10Hours	\$500,000.00
	<i>Summary for 'NumEmploy' = 200 (17 detail records)</i>		
	Avg	32Hours	\$279,166.67
	Max	50 Hours	
	300		
	Record ID Number 590	Hours	\$100,000.00
	<i>Summary for 'NumEmploy' = 300 (1 detail record)</i>		
	Avg	Hours	\$100,000.00
	Max	Hours	
	400		
	Record ID Number 750	30Hours	\$500,000.00
	<i>Summary for 'NumEmploy' = 400 (1 detail record)</i>		
	Avg	30Hours	\$500,000.00
	Max	30 Hours	
	1200		
	Record ID Number 800	10Hours	\$10,000.00

Wednesday, September 19, 2001

Page 8 of 11

This database and documentation is the confidential and proprietary information of Business Industrial Network ("Confidential Information"). You shall not disclose such Confidential Information and shall use it only in accordance with the terms of the license agreement you entered into with Business Industrial Network. No portion of these proceedings or exhibits may be copied, duplicated, used or referenced without written permission from Business Industrial Network. bin95@bin95.com

OEM Cost

Reports from online equipment downtime survey
www.AboutDowntime.com/Survey/Survey.asp

<i>Industry</i>	<i>NumEmploy</i>	<i>Max OEM response time</i>	<i>OEM average cost Per Year</i>
<i>Summary for 'NumEmploy' = 1200 (1 detail record)</i>			
	Avg	10Hours	\$10,000.00
	Max	10 Hours	
<i>Summary for 'Industry' = Other (30 detail records)</i>			
	Avg	28 Hours	\$208,695.65
	Max	50 Hours	

Wednesday, September 19, 2001

Page 9 of 11

*This database and documentation is the confidential and proprietary information of Business Industrial Network ("Confidential Information"). You shall not disclose such Confidential Information and shall use it only in accordance with the terms of the license agreement you entered into with Business Industrial Network.
No portion of these proceedings or exhibits may be copied, duplicated, used or referenced without written permission from Business Industrial Network. bin95@bin95.com*

OEM Cost

Reports from online equipment downtime survey
www.AboutDowntime.com/Survey/Survey.asp

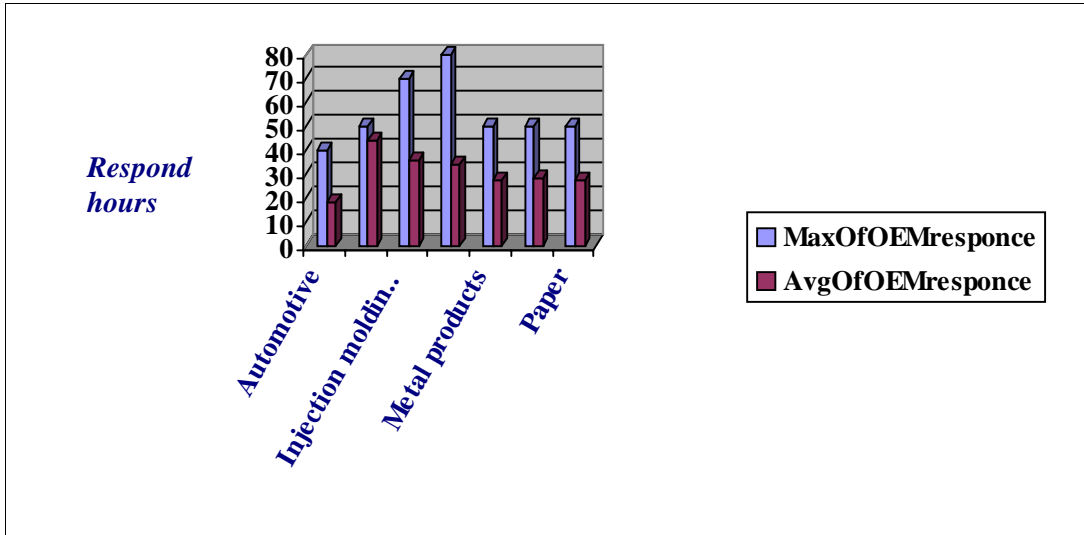
Industry	NumEmploy	Max OEM response time	OEM average cost Per Year
Paper			Samples of data in database records.
	30		
	Record ID Number 460	50Hours	\$10,000.00
	Summary for 'NumEmploy' = 30 (1 detail record)		
	Avg	50Hours	\$10,000.00
	Max	50 Hours	
	50		
	Record ID Number 220	10Hours	\$100,000.00
	Summary for 'NumEmploy' = 50 (1 detail record)		
	Avg	10Hours	\$100,000.00
	Max	10 Hours	
	150		
	Record ID Number 760	10Hours	\$10,000.00
	Summary for 'NumEmploy' = 150 (1 detail record)		
	Avg	10Hours	\$10,000.00
	Max	10 Hours	
	200		
	Record ID Number 130	40Hours	\$100,000.00
	Summary for 'NumEmploy' = 200 (1 detail record)		
	Avg	40Hours	\$100,000.00
	Max	40 Hours	
	Summary for 'Industry' = Paper (4 detail records)		
	Avg	28 Hours	\$55,000.00
	Max	50 Hours	

OEM Cost

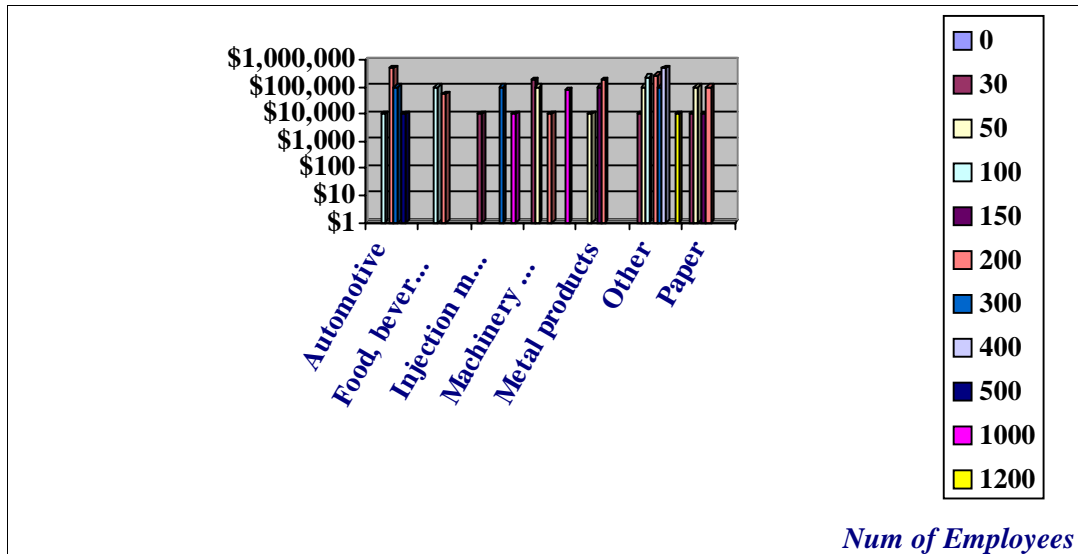
Reports from online equipment downtime survey
www.AboutDowntime.com/Survey/Survey.asp

Industry	NumEmploy	Max OEM response time	OEM average cost Per Year
----------	-----------	-----------------------	---------------------------

OEM response time



Annual OEM Cost





Business Industrial Network

We give you a medium in which to get equipment information, when you need it most...
when you're down!
Please visit www.bin95.com

General Information

Reports from online equipment downtime survey
www.AboutDowntime.com/Survey/Survey.asp

Industry	Automotive	
Number of Shifts	Occupation of participant	Percent of Outsourcing
2	Maintenance Foreman/Supervisor	10
<i>Equipment with No OEM Documentation</i>		<i>Other OEM with no Documentation</i>
Weldline Automation Inc		separate by commas
<i>PLC brands used:</i> Telemechanique		<i>Shift with most down Time</i> 2
<i>Number of Major BreakDowns per year</i> 0		<i>Other Major equipment BreakDowns</i>
<i>Major Equipment BreakDowns</i>		separate by commas
Power		
3	Plant/Maintenance Engineer	10
<i>Equipment with No OEM Documentation</i>		<i>Other OEM with no Documentation</i>
Siemens		
<i>PLC brands used:</i> Allen-Bradley, Siemens, GE Fanuc, Modicon/Gould, Honeywell, SquareD		<i>Shift with most down Time</i> 2
<i>Number of Major BreakDowns per year</i> 2		<i>Other Major equipment BreakDowns</i>
<i>Major Equipment BreakDowns</i>		separate by commas
Power		

Wednesday, September 19, 2001

Page 1 of 36

*This database and documentation is the confidential and proprietary information of Business Industrial Network ("Confidential Information"). You shall not disclose such Confidential Information and shall use it only in accordance with the terms of the license agreement you entered into with Business Industrial Network.
No portion of these proceedings or exhibits may be copied, duplicated, used or referenced without written permission from Business Industrial Network. bin95@bin95.com*

General Information

Reports from online equipment downtime survey
www.AboutDowntime.com/Survey/Survey.asp

Industry Automotive

Number of Shifts	Occupation of participant	Percent of Outsourcing
3	Maintenance Manager/Superintendent	10

Equipment with No OEM Documentation

Allen-Bradley, Mannesmann Rexroth Hydraulics, Mannesmann Rexroth-Indramat Division

PLC brands used: Allen-Bradley

Number of Major BreakDowns per year 0

Major Equipment BreakDowns

Pump

Other OEM with no Documentation

grob,landis,huller

Shift with most down Time 3

Other Major equipment BreakDowns

separate by commas

3	Maintenance Manager/Superintendent	10
---	------------------------------------	----

Equipment with No OEM Documentation

Not Selected

PLC brands used: Schneider

Number of Major BreakDowns per year 2

Major Equipment BreakDowns

Other

Other OEM with no Documentation

separate by commas

Shift with most down Time 3

Other Major equipment BreakDowns

separate by commas

General Information

Reports from online equipment downtime survey
www.AboutDowntime.com/Survey/Survey.asp

Industry Automotive

Number of Shifts	Occupation of participant	Percent of Outsourcing
3	Maintenance Foreman/Supervisor	10
Equipment with No OEM Documentation Not Selected		Other OEM with no Documentation separate by commas
PLC brands used: Omron		Shift with most down Time 0
Number of Major BreakDowns per year 1		Other Major equipment BreakDowns
Major Equipment BreakDowns Other		STAMPING PRESS

Wednesday, September 19, 2001

Page 3 of 36

*This database and documentation is the confidential and proprietary information of Business Industrial Network ("Confidential Information"). You shall not disclose such Confidential Information and shall use it only in accordance with the terms of the license agreement you entered into with Business Industrial Network.
No portion of these proceedings or exhibits may be copied, duplicated, used or referenced without written permission from Business Industrial Network. bin95@bin95.com*

General Information

Reports from online equipment downtime survey
www.AboutDowntime.com/Survey/Survey.asp

Industry Food, beverages, tobacco

Number of Shifts	Occupation of participant	Percent of Outsourcing
2	Plant/Maintenance Engineer	10
<p>Equipment with No OEM Documentation Not Selected</p> <p>PLC brands used: Siemens, Honeywell</p> <p>Number of Major BreakDowns per year 2</p> <p>Major Equipment BreakDowns Not Selected</p>		
<p>Other OEM with no Documentation Crown</p> <p>Shift with most down Time 0</p> <p>Other Major equipment BreakDowns filler</p>		
2	Maintenance Manager/Superintendent	10
<p>Equipment with No OEM Documentation Not Selected</p> <p>PLC brands used: Allen-Bradley</p> <p>Number of Major BreakDowns per year 3</p> <p>Major Equipment BreakDowns Air Compresor, Boiler</p>		
<p>Other OEM with no Documentation separate by commas</p> <p>Shift with most down Time 2</p> <p>Other Major equipment BreakDowns separate by commas</p>		

Wednesday, September 19, 2001

Page 4 of 36

This database and documentation is the confidential and proprietary information of Business Industrial Network ("Confidential Information"). You shall not disclose such Confidential Information and shall use it only in accordance with the terms of the license agreement you entered into with Business Industrial Network. No portion of these proceedings or exhibits may be copied, duplicated, used or referenced without written permission from Business Industrial Network. bin95@bin95.com

General Information

Reports from online equipment downtime survey
www.AboutDowntime.com/Survey/Survey.asp

Industry Food, beverages, tobacco

Number of Shifts	Occupation of participant	Percent of Outsourcing
2	Plant/Maintenance Engineer	10
<i>Equipment with No OEM Documentation</i> Not Selected		
<i>Other OEM with no Documentation</i> separate by commas		
<i>PLC brands used:</i> Allen-Bradley, Siemens, GE Fanuc		<i>Shift with most down Time</i> 4
<i>Number of Major BreakDowns per year</i> 1		<i>Other Major equipment BreakDowns</i>
<i>Major Equipment BreakDowns</i> Other		scales
3	Maintenance Foreman/Supervisor	10
<i>Equipment with No OEM Documentation</i> Not Selected		
<i>Other OEM with no Documentation</i> separate by commas		
<i>PLC brands used:</i> Allen-Bradley, Modicon/Gould		<i>Shift with most down Time</i> 3
<i>Number of Major BreakDowns per year</i> 2		<i>Other Major equipment BreakDowns</i>
<i>Major Equipment BreakDowns</i> Other		packing equipment, dryers

Wednesday, September 19, 2001

Page 5 of 36

*This database and documentation is the confidential and proprietary information of Business Industrial Network ("Confidential Information"). You shall not disclose such Confidential Information and shall use it only in accordance with the terms of the license agreement you entered into with Business Industrial Network.
No portion of these proceedings or exhibits may be copied, duplicated, used or referenced without written permission from Business Industrial Network. bin95@bin95.com*

General Information

Reports from online equipment downtime survey
www.AboutDowntime.com/Survey/Survey.asp

Industry Food, beverages, tobacco

Number of Shifts	Occupation of participant	Percent of Outsourcing
3	Maintenance Manager/Superintendent	0

Equipment with No OEM Documentation
 Not Selected

Other OEM with no Documentation
 separate by commas

PLC brands used: Allen-Bradley, GE Fanuc

Shift with most down Time 1

Number of Major BreakDowns per year 1

Major Equipment BreakDowns
 Not Selected

Other Major equipment BreakDowns
 separate by commas

3	Maintenance Manager/Superintendent	30
---	------------------------------------	----

Equipment with No OEM Documentation
 Allen-Bradley, Baldor Electric Company

Other OEM with no Documentation
 separate by commas

PLC brands used: Allen-Bradley

Shift with most down Time 2

Number of Major BreakDowns per year 2

Major Equipment BreakDowns
 Power

Other Major equipment BreakDowns
 separate by commas

General Information

Reports from online equipment downtime survey
www.AboutDowntime.com/Survey/Survey.asp

Industry Food, beverages, tobacco

Number of Shifts	Occupation of participant	Percent of Outsourcing
3	Other	10

Equipment with No OEM Documentation

Baldor Electric Company

Other OEM with no Documentation

separate by commas

PLC brands used: Allen-Bradley

Shift with most down Time 4

Number of Major BreakDowns per year 4

Major Equipment BreakDowns

Hoppers, Other

Other Major equipment BreakDowns

Hoppers, Feeders, Drive Gearbox,

General Information

Reports from online equipment downtime survey
www.AboutDowntime.com/Survey/Survey.asp

Industry Injection molding/ Extrusion

Number of Shifts	Occupation of participant	Percent of Outsourcing
2	Plant/Maintenance Engineer	10

Equipment with No OEM Documentation
 Not Selected

Other OEM with no Documentation
 Nucon, Maguire

PLC brands used: Allen-Bradley

Shift with most down Time 2

Number of Major BreakDowns per year 1

Major Equipment BreakDowns

Air Compresor, Power

Other Major equipment BreakDowns
 separate by commas

2	Plant/Maintenance Engineer	40
---	----------------------------	----

Equipment with No OEM Documentation
 Direct Wire & Cable Inc

Other OEM with no Documentation
 separate by commas

PLC brands used: Allen-Bradley

Shift with most down Time 4

Number of Major BreakDowns per year 4

Major Equipment BreakDowns

Water Chiller

Other Major equipment BreakDowns
 separate by commas

General Information

Reports from online equipment downtime survey
www.AboutDowntime.com/Survey/Survey.asp

Industry Injection molding/ Extrusion

Number of Shifts	Occupation of participant	Percent of Outsourcing
3	Maintenance Manager/Superintendent	10

Equipment with No OEM Documentation

ESTA Corp, Simplex

Other OEM with no Documentation

Accu-Sort

PLC brands used: Allen-Bradley, Siemens, Mitsubishi, Telemecanique, SquareD

Shift with most down Time 3

Number of Major BreakDowns per year 1

Major Equipment BreakDowns

Power

Other Major equipment BreakDowns

conveyors

3	Other	10
---	-------	----

Equipment with No OEM Documentation

Not Selected

Other OEM with no Documentation

separate by commas

PLC brands used: Allen-Bradley, Modicon/Gould

Shift with most down Time 3

Number of Major BreakDowns per year 1

Major Equipment BreakDowns

Power

Other Major equipment BreakDowns

separate by commas

Wednesday, September 19, 2001

Page 9 of 36

This database and documentation is the confidential and proprietary information of Business Industrial Network ("Confidential Information"). You shall not disclose such Confidential Information and shall use it only in accordance with the terms of the license agreement you entered into with Business Industrial Network.

No portion of these proceedings or exhibits may be copied, duplicated, used or referenced without written permission from Business Industrial Network. bin95@bin95.com

General Information

Reports from online equipment downtime survey
www.AboutDowntime.com/Survey/Survey.asp

Industry Injection molding/ Extrusion

Number of Shifts	Occupation of participant	Percent of Outsourcing
4	Plant/Maintenance Engineer	10
Equipment with No OEM Documentation Allen-Bradley		Other OEM with no Documentation separate by commas
PLC brands used: Allen-Bradley		Shift with most down Time 3
Number of Major BreakDowns per year 1		Other Major equipment BreakDowns
Major Equipment BreakDowns Other		Thermoformer

General Information

Reports from online equipment downtime survey
www.AboutDowntime.com/Survey/Survey.asp

Industry Machinery and equipment

Number of Shifts	Occupation of participant	Percent of Outsourcing
1	Other	10
	<i>Equipment with No OEM Documentation</i> ABB Automation Inc	<i>Other OEM with no Documentation</i> separate by commas
	<i>PLC brands used:</i> Allen-Bradley	<i>Shift with most down Time</i> 1
	<i>Number of Major BreakDowns per year</i> 3	<i>Other Major equipment BreakDowns</i> separate by commas
	<i>Major Equipment BreakDowns</i> Power	
2	Other	30
	<i>Equipment with No OEM Documentation</i> Not Selected	<i>Other OEM with no Documentation</i> separate by commas
	<i>PLC brands used:</i> Not Selected	<i>Shift with most down Time</i> 1
	<i>Number of Major BreakDowns per year</i> 1	<i>Other Major equipment BreakDowns</i> separate by commas
	<i>Major Equipment BreakDowns</i> Other	

General Information

Reports from online equipment downtime survey
www.AboutDowntime.com/Survey/Survey.asp

Industry Machinery and equipment

Number of Shifts	Occupation of participant	Percent of Outsourcing
3	Maintenance Manager/Superintendent	10
	<i>Equipment with No OEM Documentation</i> Allen-Bradley, ESTA Corp	<i>Other OEM with no Documentation</i> Accu-sort
	<i>PLC brands used:</i> Telemechanique, SquareD	<i>Shift with most down Time</i> 3
	<i>Number of Major BreakDowns per year</i> 1	<i>Other Major equipment BreakDowns</i>
	<i>Major Equipment BreakDowns</i> Power	conveyors
3	Other	20
	<i>Equipment with No OEM Documentation</i> FANUC Robotics North America, Inc.	<i>Other OEM with no Documentation</i> separate by commas
	<i>PLC brands used:</i> GE Fanuc	<i>Shift with most down Time</i> 3
	<i>Number of Major BreakDowns per year</i> 1	<i>Other Major equipment BreakDowns</i>
	<i>Major Equipment BreakDowns</i> Power	separate by commas

General Information

Reports from online equipment downtime survey
www.AboutDowntime.com/Survey/Survey.asp

Industry Machinery and equipment

Number of Shifts	Occupation of participant	Percent of Outsourcing
3	Maintenance Manager/Superintendent	10
	<i>Equipment with No OEM Documentation</i> Allen-Bradley, ESTA Corp	<i>Other OEM with no Documentation</i> Accu-sort
	<i>PLC brands used:</i> Telemechanique, SquareD	<i>Shift with most down Time</i> 3
	<i>Number of Major BreakDowns per year</i> 1	<i>Other Major equipment BreakDowns</i>
	<i>Major Equipment BreakDowns</i> Power	conveyors
3	Plant/Maintenance Engineer	0
	<i>Equipment with No OEM Documentation</i> Honeywell	<i>Other OEM with no Documentation</i> separate by commas
	<i>PLC brands used:</i> Allen-Bradley	<i>Shift with most down Time</i> 0
	<i>Number of Major BreakDowns per year</i> 1	<i>Other Major equipment BreakDowns</i>
	<i>Major Equipment BreakDowns</i> Pump	separate by commas

General Information

Reports from online equipment downtime survey
www.AboutDowntime.com/Survey/Survey.asp

Industry Machinery and equipment

Number of Shifts	Occupation of participant	Percent of Outsourcing
3	Maintenance Manager/Superintendent	20

Equipment with No OEM Documentation

Allen-Bradley

Other OEM with no Documentation

Accu-Sort

PLC brands used: Allen-Bradley, Mitsubishi, Telemecanique, SquareD

Shift with most down Time 3

Number of Major BreakDowns per year 1

Major Equipment BreakDowns

Power

Other Major equipment BreakDowns

conveyor

4	Maintenance Manager/Superintendent	80
---	------------------------------------	----

Equipment with No OEM Documentation

Not Selected

Other OEM with no Documentation

separate by commas

PLC brands used: Not Selected

Shift with most down Time 2

Number of Major BreakDowns per year 1

Major Equipment BreakDowns

CNC

Other Major equipment BreakDowns

separate by commas

Wednesday, September 19, 2001

Page 14 of 36

This database and documentation is the confidential and proprietary information of Business Industrial Network ("Confidential Information"). You shall not disclose such Confidential Information and shall use it only in accordance with the terms of the license agreement you entered into with Business Industrial Network.

No portion of these proceedings or exhibits may be copied, duplicated, used or referenced without written permission from Business Industrial Network. bin95@bin95.com

General Information

Reports from online equipment downtime survey
www.AboutDowntime.com/Survey/Survey.asp

Industry Machinery and equipment

Number of Shifts	Occupation of participant	Percent of Outsourcing
4	Maintenance Foreman/Supervisor	10
Equipment with No OEM Documentation A & A Manufacturing Co Inc, Accurpress/Accurshear, AUTOCON Technologies, Inc. , Cutler Hammer, DynaPath, Fagor Automation Corporation, HE & M Saw Inc, Koolant		Other OEM with no Documentation separate by commas
PLC brands used: Don't Know		Shift with most down Time 2
Number of Major BreakDowns per year 1		Other Major equipment BreakDowns
Major Equipment BreakDowns Other		cnc

General Information

Reports from online equipment downtime survey
www.AboutDowntime.com/Survey/Survey.asp

<i>Industry</i>		<i>Metal products</i>	
<i>Number of Shifts</i>	<i>Occupation of participant</i>	<i>Percent of Outsourcing</i>	
2	Maintenance Manager/Superintendent	10	
<i>Equipment with No OEM Documentation</i>		<i>Other OEM with no Documentation</i>	
Not Selected		separate by commas	
<i>PLC brands used:</i> Siemens, Mitsubishi		<i>Shift with most down Time</i> 4	
<i>Number of Major BreakDowns per year</i> 4		<i>Other Major equipment BreakDowns</i>	
<i>Major Equipment BreakDowns</i>		Plant Specific Equipment,	
Other			
2	Maintenance Crafts/Tradesperson	30	
<i>Equipment with No OEM Documentation</i>		<i>Other OEM with no Documentation</i>	
AC Machine Inc, Allen-Bradley, Wisconsin Automated Machinery		separate by commas	
<i>PLC brands used:</i> Allen-Bradley		<i>Shift with most down Time</i> 1	
<i>Number of Major BreakDowns per year</i> 10		<i>Other Major equipment BreakDowns</i>	
<i>Major Equipment BreakDowns</i>		separate by commas	
Air Compressor, Pump, Boiler, Power			

General Information

Reports from online equipment downtime survey
www.AboutDowntime.com/Survey/Survey.asp

Industry	Metal products	
Number of Shifts	Occupation of participant	Percent of Outsourcing
2	Other	10
Equipment with No OEM Documentation		Other OEM with no Documentation
Not Selected		separate by commas
PLC brands used: Allen-Bradley, GE Fanuc, PLCDirect, Telemecanique, IDEC		Shift with most down Time 4
Number of Major BreakDowns per year 0		
Major Equipment BreakDowns		Other Major equipment BreakDowns
Not Selected		separate by commas
3	Process/Industrial Engineer	10
Equipment with No OEM Documentation		Other OEM with no Documentation
Allen-Bradley, Alliant Energy Resources		separate by commas
PLC brands used: Allen-Bradley		Shift with most down Time 4
Number of Major BreakDowns per year 2		
Major Equipment BreakDowns		Other Major equipment BreakDowns
Other		roll stands, hydraulics

General Information

Reports from online equipment downtime survey
www.AboutDowntime.com/Survey/Survey.asp

Industry	Metal products	
Number of Shifts	Occupation of participant	Percent of Outsourcing
3	Maintenance Manager/Superintendent	10
Equipment with No OEM Documentation		Other OEM with no Documentation
Not Selected		separate by commas
PLC brands used: Not Selected, Allen-Bradley, Omron, Siemens, Mitsubishi, Toshiba		Shift with most down Time 4
Number of Major BreakDowns per year 0		
Major Equipment BreakDowns		Other Major equipment BreakDowns
Not Selected		separate by commas
3	Maintenance Crafts/Tradesperson	10
Equipment with No OEM Documentation		Other OEM with no Documentation
Weldsale Co		separate by commas
PLC brands used: SquareD		Shift with most down Time 3
Number of Major BreakDowns per year 2		
Major Equipment BreakDowns		Other Major equipment BreakDowns
Air Compressor		separate by commas

General Information

Reports from online equipment downtime survey
www.AboutDowntime.com/Survey/Survey.asp

Industry	Other		
Number of Shifts	Occupation of participant	Percent of Outsourcing	
0	Other	10	
	<i>Equipment with No OEM Documentation</i> Not Selected		<i>Other OEM with no Documentation</i> separate by commas
	<i>PLC brands used:</i> Don't Know		<i>Shift with most down Time</i> 1
	<i>Number of Major BreakDowns per year</i> 0		
	<i>Major Equipment BreakDowns</i> Not Selected		<i>Other Major equipment BreakDowns</i> No breakdown affected 1/3 of our facility
0	Other	20	
	<i>Equipment with No OEM Documentation</i> Not Selected		<i>Other OEM with no Documentation</i> separate by commas
	<i>PLC brands used:</i> Not Selected		<i>Shift with most down Time</i> 3
	<i>Number of Major BreakDowns per year</i> 1		
	<i>Major Equipment BreakDowns</i> Other		<i>Other Major equipment BreakDowns</i> separate by commas

General Information

Reports from online equipment downtime survey
www.AboutDowntime.com/Survey/Survey.asp

<i>Industry</i>	<i>Other</i>		
<i>Number of Shifts</i>	<i>Occupation of participant</i>	<i>Percent of Outsourcing</i>	
1	Other	10	
	<i>Equipment with No OEM Documentation</i> Not Selected		<i>Other OEM with no Documentation</i> Heidelberg USA
	<i>PLC brands used:</i> Not Selected		<i>Shift with most down Time</i> 4
	<i>Number of Major BreakDowns per year</i> 0		
	<i>Major Equipment BreakDowns</i> Not Selected		<i>Other Major equipment BreakDowns</i> separate by commas
2	Maintenance Foreman/Supervisor	20	
	<i>Equipment with No OEM Documentation</i> Not Selected		<i>Other OEM with no Documentation</i> separate by commas
	<i>PLC brands used:</i> Allen-Bradley, Siemens		<i>Shift with most down Time</i> 4
	<i>Number of Major BreakDowns per year</i> 4		
	<i>Major Equipment BreakDowns</i> Air Compressor, Pump, Boiler		<i>Other Major equipment BreakDowns</i> separate by commas

General Information

Reports from online equipment downtime survey
www.AboutDowntime.com/Survey/Survey.asp

Industry	Other		
Number of Shifts	Occupation of participant	Percent of Outsourcing	
2	Other	10	
	<i>Equipment with No OEM Documentation</i> Not Selected		<i>Other OEM with no Documentation</i> separate by commas
	<i>PLC brands used:</i> PLCDirect		<i>Shift with most down Time</i> 1
	<i>Number of Major BreakDowns per year</i> 0		
	<i>Major Equipment BreakDowns</i> Not Selected		<i>Other Major equipment BreakDowns</i> separate by commas
2	Plant/Maintenance Engineer	10	
	<i>Equipment with No OEM Documentation</i> Not Selected		<i>Other OEM with no Documentation</i> separate by commas
	<i>PLC brands used:</i> Omron		<i>Shift with most down Time</i> 1
	<i>Number of Major BreakDowns per year</i> 0		
	<i>Major Equipment BreakDowns</i> Not Selected		<i>Other Major equipment BreakDowns</i> wave solder machine

General Information

Reports from online equipment downtime survey
www.AboutDowntime.com/Survey/Survey.asp

Industry	Other		
Number of Shifts	Occupation of participant	Percent of Outsourcing	
2	Maintenance Manager/Superintendent	10	
	Equipment with No OEM Documentation Not Selected		Other OEM with no Documentation separate by commas
	PLC brands used: Allen-Bradley, Omron, Siemens, Mitsubishi, GE Fanuc, Modicon/Gould		Shift with most down Time 1
	Number of Major BreakDowns per year 1		Other Major equipment BreakDowns separate by commas
	Major Equipment BreakDowns Air Compressor		
2	Maintenance Manager/Superintendent	10	
	Equipment with No OEM Documentation Not Selected		Other OEM with no Documentation separate by commas
	PLC brands used: Allen-Bradley, Omron, GE Fanuc		Shift with most down Time 2
	Number of Major BreakDowns per year 3		Other Major equipment BreakDowns Waste, Residule collection
	Major Equipment BreakDowns Other		

General Information

Reports from online equipment downtime survey
www.AboutDowntime.com/Survey/Survey.asp

Industry	Other	
Number of Shifts	Occupation of participant	Percent of Outsourcing
2	Maintenance Manager/Superintendent	10
Equipment with No OEM Documentation Not Selected		Other OEM with no Documentation Temescal, Veeco, Kasper, Canon, Karl Suss, Solitec, Semitool, Hybond, Spire, Bruce
PLC brands used: Allen-Bradley, Omron, Siemens, Telemecanique, Schneider		Shift with most down Time 1
Number of Major BreakDowns per year 2		Other Major equipment BreakDowns evaporators, bonders, aligners, furnaces
Major Equipment BreakDowns Other		
3	Maintenance Technician	10
Equipment with No OEM Documentation Salvagnini		Other OEM with no Documentation Mazak
PLC brands used: Allen-Bradley		Shift with most down Time 2
Number of Major BreakDowns per year 0		Other Major equipment BreakDowns manf. machines
Major Equipment BreakDowns Pump		

General Information

Reports from online equipment downtime survey
www.AboutDowntime.com/Survey/Survey.asp

<i>Industry</i>	<i>Other</i>		
<i>Number of Shifts</i>	<i>Occupation of participant</i>	<i>Percent of Outsourcing</i>	
3	Maintenance Technician	10	
<i>Equipment with No OEM Documentation</i>		<i>Other OEM with no Documentation</i>	
Not Selected		separate by commas	
<i>PLC brands used:</i> Allen-Bradley		<i>Shift with most down Time</i> 0	
<i>Number of Major BreakDowns per year</i> 0		<i>Other Major equipment BreakDowns</i>	
<i>Major Equipment BreakDowns</i>		separate by commas	
Power			
3	Maintenance Manager/Superintendent	20	
<i>Equipment with No OEM Documentation</i>		<i>Other OEM with no Documentation</i>	
Mitsubishi		separate by commas	
<i>PLC brands used:</i> Allen-Bradley		<i>Shift with most down Time</i> 4	
<i>Number of Major BreakDowns per year</i> 0		<i>Other Major equipment BreakDowns</i>	
<i>Major Equipment BreakDowns</i>		separate by commas	
Not Selected			

General Information

Reports from online equipment downtime survey
www.AboutDowntime.com/Survey/Survey.asp

<i>Industry</i>	<i>Other</i>		
<i>Number of Shifts</i>	<i>Occupation of participant</i>	<i>Percent of Outsourcing</i>	
3	Process/Industrial Engineer	10	
	<i>Equipment with No OEM Documentation</i> Allen-Bradley		<i>Other OEM with no Documentation</i> separate by commas
	<i>PLC brands used:</i> Allen-Bradley		<i>Shift with most down Time</i> 1
	<i>Number of Major BreakDowns per year</i> 1		
	<i>Major Equipment BreakDowns</i> Pump		<i>Other Major equipment BreakDowns</i> separate by commas
3	Plant/Maintenance Engineer	10	
	<i>Equipment with No OEM Documentation</i> Not Selected		<i>Other OEM with no Documentation</i> separate by commas
	<i>PLC brands used:</i> Allen-Bradley		<i>Shift with most down Time</i> 3
	<i>Number of Major BreakDowns per year</i> 4		
	<i>Major Equipment BreakDowns</i> Air Compressor, Water Chiller, Power		<i>Other Major equipment BreakDowns</i> separate by commas

General Information

Reports from online equipment downtime survey
www.AboutDowntime.com/Survey/Survey.asp

<i>Industry</i>	<i>Other</i>		
<i>Number of Shifts</i>	<i>Occupation of participant</i>	<i>Percent of Outsourcing</i>	
3	Other	50	
<i>Equipment with No OEM Documentation</i>		<i>Other OEM with no Documentation</i>	
Komatsu Cutting Technologies		INGERSOLL RAND	
<i>PLC brands used:</i> Not Selected		<i>Shift with most down Time</i> 3	
<i>Number of Major BreakDowns per year</i>		1	
<i>Major Equipment BreakDowns</i>		<i>Other Major equipment BreakDowns</i>	
Other		Hydraulic shovels&trucks	
3	Other	30	
<i>Equipment with No OEM Documentation</i>		<i>Other OEM with no Documentation</i>	
Omron, SquareD		separate by commas	
<i>PLC brands used:</i> Allen-Bradley		<i>Shift with most down Time</i> 0	
<i>Number of Major BreakDowns per year</i>		5	
<i>Major Equipment BreakDowns</i>		<i>Other Major equipment BreakDowns</i>	
Not Selected, Air Compresor, Hoppers, Power		separate by commas	

General Information

Reports from online equipment downtime survey
www.AboutDowntime.com/Survey/Survey.asp

<i>Industry</i>	<i>Other</i>		
<i>Number of Shifts</i>	<i>Occupation of participant</i>	<i>Percent of Outsourcing</i>	
3	Plant/Maintenance Engineer	10	
	<i>Equipment with No OEM Documentation</i> Not Selected		<i>Other OEM with no Documentation</i> Reliance
	<i>PLC brands used:</i> Not Selected		<i>Shift with most down Time</i> 3
	<i>Number of Major BreakDowns per year</i> 3		<i>Other Major equipment BreakDowns</i>
	<i>Major Equipment BreakDowns</i> Other		Large DC Drives, Preheat Furnace, Monorail System
3	Maintenance Clerk	10	
	<i>Equipment with No OEM Documentation</i> Not Selected		<i>Other OEM with no Documentation</i> separate by commas
	<i>PLC brands used:</i> Modicon/Gould		<i>Shift with most down Time</i> 1
	<i>Number of Major BreakDowns per year</i> 1		<i>Other Major equipment BreakDowns</i>
	<i>Major Equipment BreakDowns</i> Air Compressor		separate by commas

General Information

Reports from online equipment downtime survey
www.AboutDowntime.com/Survey/Survey.asp

<i>Industry</i>	<i>Other</i>		
<i>Number of Shifts</i>	<i>Occupation of participant</i>	<i>Percent of Outsourcing</i>	
3	Other	10	
	<i>Equipment with No OEM Documentation</i> Siemens		<i>Other OEM with no Documentation</i> separate by commas
	<i>PLC brands used:</i> Allen-Bradley		<i>Shift with most down Time</i> 1
	<i>Number of Major BreakDowns per year</i> 3		
	<i>Major Equipment BreakDowns</i> Air Compressor		<i>Other Major equipment BreakDowns</i> separate by commas
3	Maintenance Manager/Superintendent	20	
	<i>Equipment with No OEM Documentation</i> ABB Automation Inc, LS Industries Inc		<i>Other OEM with no Documentation</i> separate by commas
	<i>PLC brands used:</i> Allen-Bradley, GE Fanuc, PLCDirect		<i>Shift with most down Time</i> 4
	<i>Number of Major BreakDowns per year</i> 2		
	<i>Major Equipment BreakDowns</i> Power		<i>Other Major equipment BreakDowns</i> separate by commas

General Information

Reports from online equipment downtime survey
www.AboutDowntime.com/Survey/Survey.asp

Industry	Other		
Number of Shifts	Occupation of participant	Percent of Outsourcing	
3	Plant/Maintenance Engineer	30	
	Equipment with No OEM Documentation Baldor Electric Company , Esco Tool, Honeywell, Panametrics Inc, Praxair Inc, Raytec Measuring Systems, Rockwell Automation, Siemens, Simplex, SquareD, Toshiba		Other OEM with no Documentation separate by commas
	PLC brands used: Allen-Bradley		Shift with most down Time 3
	Number of Major BreakDowns per year 1		
	Major Equipment BreakDowns Boiler		Other Major equipment BreakDowns separate by commas
3	Maintenance Manager/Superintendent	10	
	Equipment with No OEM Documentation Not Selected		Other OEM with no Documentation separate by commas
	PLC brands used: Allen-Bradley		Shift with most down Time 2
	Number of Major BreakDowns per year 2		
	Major Equipment BreakDowns Power		Other Major equipment BreakDowns separate by commas

General Information

Reports from online equipment downtime survey
www.AboutDowntime.com/Survey/Survey.asp

<i>Industry</i>	<i>Other</i>		
<i>Number of Shifts</i>	<i>Occupation of participant</i>	<i>Percent of Outsourcing</i>	
3	Maintenance Manager/Superintendent	10	
	<i>Equipment with No OEM Documentation</i> ABB Automation Inc		<i>Other OEM with no Documentation</i> separate by commas
	<i>PLC brands used:</i> Allen-Bradley		<i>Shift with most down Time</i> 3
	<i>Number of Major BreakDowns per year</i> 0		
	<i>Major Equipment BreakDowns</i> Power		<i>Other Major equipment BreakDowns</i> separate by commas
3	Other	10	
	<i>Equipment with No OEM Documentation</i> FANUC Robotics North America, Inc.		<i>Other OEM with no Documentation</i> separate by commas
	<i>PLC brands used:</i> Modicon/Gould		<i>Shift with most down Time</i> 4
	<i>Number of Major BreakDowns per year</i> 0		
	<i>Major Equipment BreakDowns</i> Not Selected		<i>Other Major equipment BreakDowns</i> separate by commas

General Information

Reports from online equipment downtime survey
www.AboutDowntime.com/Survey/Survey.asp

<i>Industry</i>	<i>Other</i>		
<i>Number of Shifts</i>	<i>Occupation of participant</i>	<i>Percent of Outsourcing</i>	
3	Plant/Maintenance Engineer	30	
	<i>Equipment with No OEM Documentation</i> Not Selected		<i>Other OEM with no Documentation</i> separate by commas
	<i>PLC brands used:</i> Don't Know		<i>Shift with most down Time</i> 4
	<i>Number of Major BreakDowns per year</i> 4		
	<i>Major Equipment BreakDowns</i> Other		<i>Other Major equipment BreakDowns</i> equipment
4	Other	10	
	<i>Equipment with No OEM Documentation</i> Schneider		<i>Other OEM with no Documentation</i> separate by commas
	<i>PLC brands used:</i> Schneider		<i>Shift with most down Time</i> 4
	<i>Number of Major BreakDowns per year</i> 1		
	<i>Major Equipment BreakDowns</i> Power		<i>Other Major equipment BreakDowns</i> separate by commas

General Information

Reports from online equipment downtime survey
www.AboutDowntime.com/Survey/Survey.asp

Industry	Other		
Number of Shifts	Occupation of participant	Percent of Outsourcing	
4	Maintenance Manager/Superintendent	10	
	<i>Equipment with No OEM Documentation</i> Not Selected		<i>Other OEM with no Documentation</i> separate by commas
	<i>PLC brands used:</i> Allen-Bradley		<i>Shift with most down Time</i> 2
	<i>Number of Major BreakDowns per year</i> 1		<i>Other Major equipment BreakDowns</i>
	<i>Major Equipment BreakDowns</i> Other		Process Equipment
4	Maintenance Manager/Superintendent	10	
	<i>Equipment with No OEM Documentation</i> Not Selected		<i>Other OEM with no Documentation</i> separate by commas
	<i>PLC brands used:</i> Siemens		<i>Shift with most down Time</i> 4
	<i>Number of Major BreakDowns per year</i> 0		<i>Other Major equipment BreakDowns</i>
	<i>Major Equipment BreakDowns</i> Not Selected		separate by commas

General Information

Reports from online equipment downtime survey
www.AboutDowntime.com/Survey/Survey.asp

Industry	Other		
Number of Shifts	Occupation of participant	Percent of Outsourcing	
4	Plant/Maintenance Engineer	10	
	<i>Equipment with No OEM Documentation</i> Not Selected		<i>Other OEM with no Documentation</i> separate by commas
	<i>PLC brands used:</i> Don't Know		<i>Shift with most down Time</i> 4
	<i>Number of Major BreakDowns per year</i> 0		
	<i>Major Equipment BreakDowns</i> Not Selected		<i>Other Major equipment BreakDowns</i> separate by commas
9	Other	0	
	<i>Equipment with No OEM Documentation</i> Not Selected		<i>Other OEM with no Documentation</i> separate by commas
	<i>PLC brands used:</i> Not Selected		<i>Shift with most down Time</i> 9
	<i>Number of Major BreakDowns per year</i> 0		
	<i>Major Equipment BreakDowns</i> Not Selected		<i>Other Major equipment BreakDowns</i> separate by commas

General Information

Reports from online equipment downtime survey
www.AboutDowntime.com/Survey/Survey.asp

Industry	Paper		
Number of Shifts	Occupation of participant	Percent of Outsourcing	
1	Other	30	
	<i>Equipment with No OEM Documentation</i> Not Selected		<i>Other OEM with no Documentation</i> separate by commas
	<i>PLC brands used:</i> Not Selected		<i>Shift with most down Time</i> 4
	<i>Number of Major BreakDowns per year</i> 1		
	<i>Major Equipment BreakDowns</i> Power		<i>Other Major equipment BreakDowns</i> separate by commas
2	Other	75	
	<i>Equipment with No OEM Documentation</i> Haberle/Ken Bergman & Assoc		<i>Other OEM with no Documentation</i> Heidelberg
	<i>PLC brands used:</i> Siemens		<i>Shift with most down Time</i> 1
	<i>Number of Major BreakDowns per year</i> 0		
	<i>Major Equipment BreakDowns</i> Other		<i>Other Major equipment BreakDowns</i> printing machine

Wednesday, September 19, 2001

Page 34 of 36

This database and documentation is the confidential and proprietary information of Business Industrial Network ("Confidential Information"). You shall not disclose such Confidential Information and shall use it only in accordance with the terms of the license agreement you entered into with Business Industrial Network. No portion of these proceedings or exhibits may be copied, duplicated, used or referenced without written permission from Business Industrial Network. bin95@bin95.com

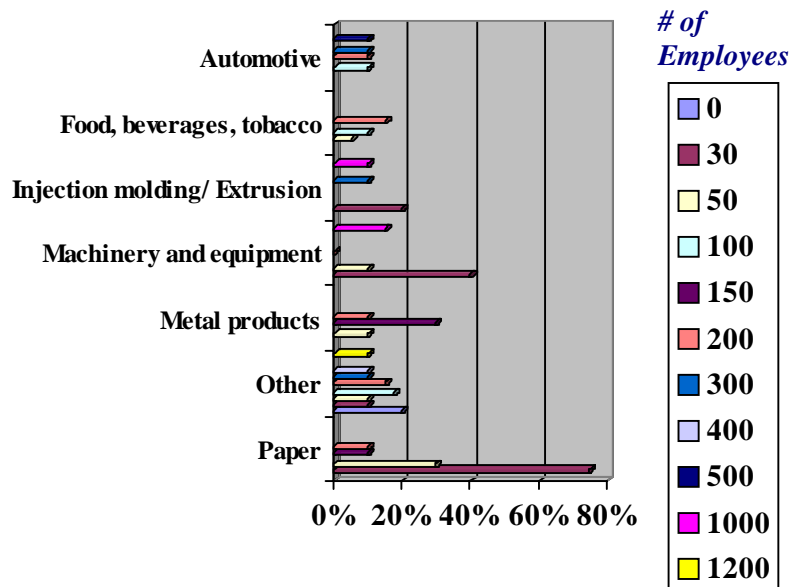
General Information

Reports from online equipment downtime survey
www.AboutDowntime.com/Survey/Survey.asp

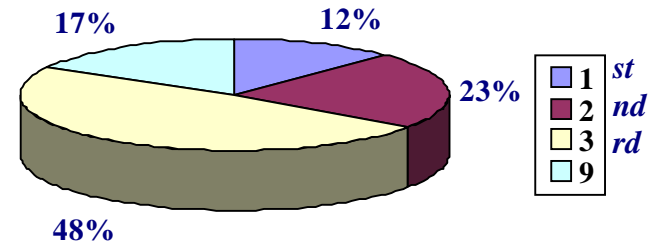
Industry	Paper		
Number of Shifts	Occupation of participant	Percent of Outsourcing	
3	Maintenance Manager/Superintendent	10	
Equipment with No OEM Documentation		Other OEM with no Documentation	
Cutler Hammer, GE Fanuc, Siemens		Micromatic	
PLC brands used: Allen-Bradley, Siemens, GE Fanuc, Cutler Hammer		Shift with most down Time 2	
Number of Major BreakDowns per year 4		Other Major equipment BreakDowns	
Major Equipment BreakDowns		Asitrade, Flexo Printers, Offset Printers	
Boiler, Other			
3	Maintenance Manager/Superintendent	10	
Equipment with No OEM Documentation		Other OEM with no Documentation	
Allen-Bradley		separate by commas	
PLC brands used: Allen-Bradley		Shift with most down Time 9	
Number of Major BreakDowns per year 2		Other Major equipment BreakDowns	
Major Equipment BreakDowns		separate by commas	
Boiler			

General Information

Percent of Outsourcing



Most Downtime per Shift



9 = participants did not answer

The pie chart above just shows what we all know to be true. The downtime is proportional to the lack of technical support on the "off shifts". The addition of large manufacturers to the survey did not change this fact. This is also the primary purpose of Business Industrial Network. "To provide technical support 24/7 via the internet, and other media." (WWW.BIN95.com)

The percentage of outsourcing remains to be an average of 10% across all industries.